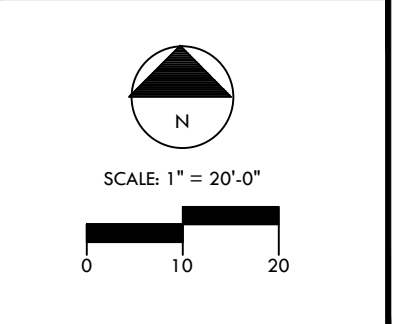


MATERIAL LIST			
PALM TREES			
QTY	Botanical	Common	Remarks
4	Coccothrinax miraguama	Miraguama Palm	
13	Rhapidophyllum hystrix	Needle Palm	
27	Sabal palmetto	Sabal Palm	
10	Thrinax radiata	Florida Thatch Palm	
COLOR			
QTY	Botanical	Common	Remarks
29	Aechmea rubens	Bromeliad 'Rubens'	
190	Bougainvillea 'Silhouette'	Bougainvillea 'Silhouette'	
12	Hohenbergia castellanosi	Hohenbergia Bromeliad	
GRASSES			
QTY	Botanical	Common	Remarks
130	Dianella tasmanica 'Variegata'	Flax Lily	
103	Lomandra longifolia 'Breeze'	Breeze Grass	
90	Zamia floridana	Coontie Fern	
GROUNDCOVER			
QTY	Botanical	Common	Remarks
336	Annuals spp. Selected by L.A.	Seasonal Flower	
1398	Trachelospermum asiaticum	Asian Jasmine	
MATERIAL			
QTY	Botanical	Common	Remarks
	Mulch		All planting beds, 3" depth
	Planting Soil		Use in all groundcover/annual beds, composed of 1/3 screened peat, 1/3 composted pine bark, 1/3 coarse sand with pH adjusted to 6.5.

GOETZ+STROPES
 LANDSCAPE ARCHITECTS INC.
 185 TENTH STREET SOUTH, NAPLES, FLORIDA 34102
 t. 239.643.0077 www.gsnaples.com
 E-mail: egoetz@gsnaples.com / bbromley@gsnaples.com

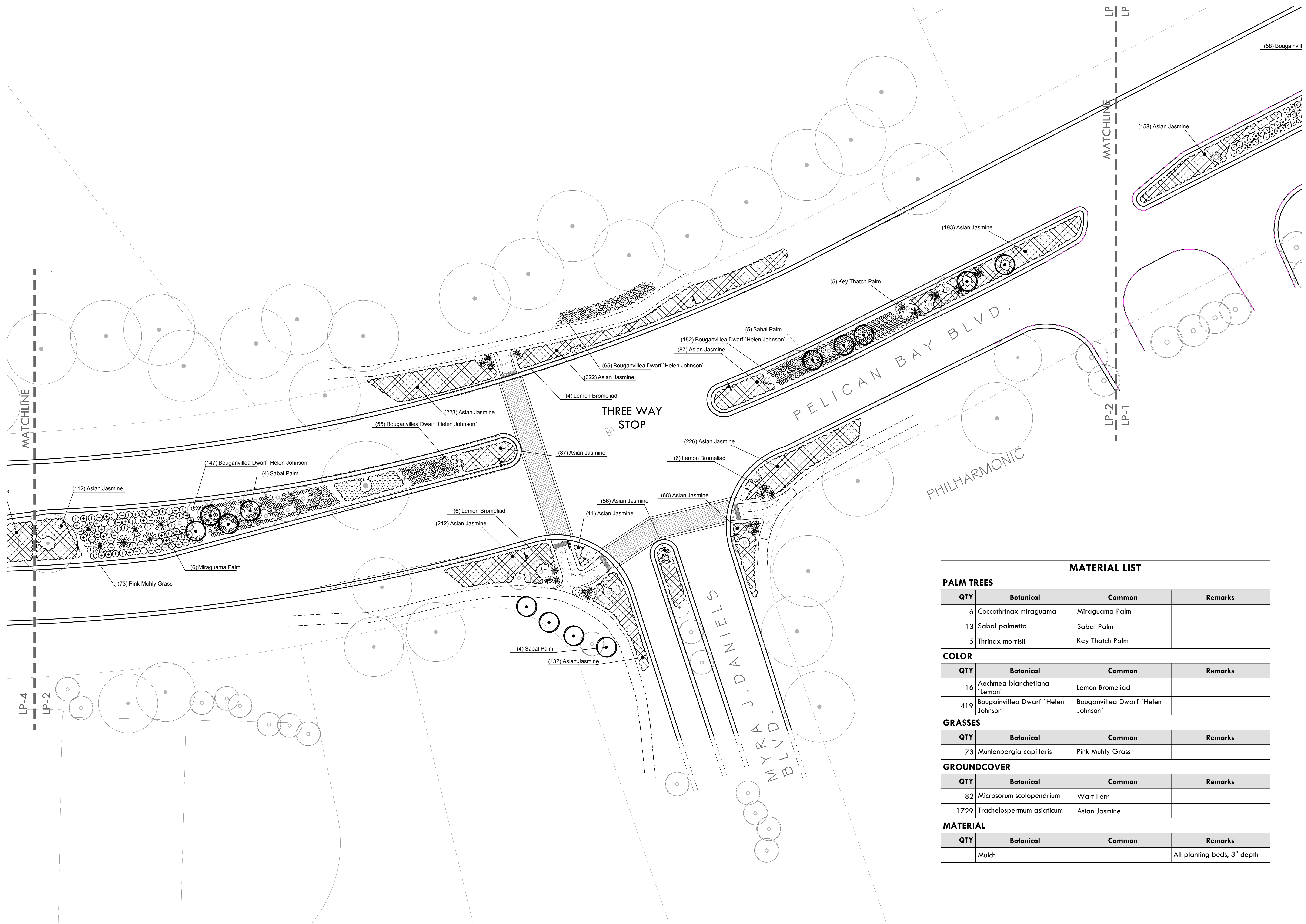
Seal & Signature
 Elin Goetz - FL#1152

PBSD ROADWAY IMPROVEMENTS
 PELICAN BAY BLVD & RIDGEWOOD DRIVE INTERSECTION
 NAPLES, FLORIDA
 ROADWAY PLANTING PLANS



DRAWN: WV8
 CHECKED: EG
 DATE: 7/20/2011
 DWG: PBSD ROADWAY 8-4-11

REVISION: SHEET
LP-1

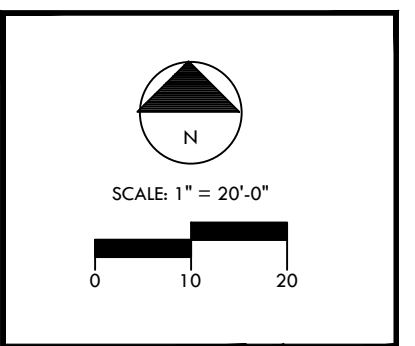


MATERIAL LIST			
PALM TREES			
QTY	Botanical	Common	Remarks
6	Coccothrinax miraguama	Miraguama Palm	
13	Sabal palmetto	Sabal Palm	
5	Thrinax morrisii	Key Thatch Palm	
COLOR			
QTY	Botanical	Common	Remarks
16	Aechmea blanchetiana 'Lemon'	Lemon Bromeliad	
419	Bougainvillea Dwarf 'Helen Johnson'	Bougainvillea Dwarf 'Helen Johnson'	
GRASSES			
QTY	Botanical	Common	Remarks
73	Muhlenbergia capillaris	Pink Muhly Grass	
GROUNDCOVER			
QTY	Botanical	Common	Remarks
82	Microsorium scolopendrium	Wart Fern	
1729	Trachelospermum asiaticum	Asian Jasmine	
MATERIAL			
QTY	Botanical	Common	Remarks
	Mulch		All planting beds, 3" depth

GOETZ+STROPES
 LANDSCAPE ARCHITECTS INC.
 185 TENTH STREET SOUTH, NAPLES, FLORIDA 34102
 t. 239.643.0077 www.gsnaples.com
 E-mail: egoetz@gsnaples.com / bbromley@gsnaples.com

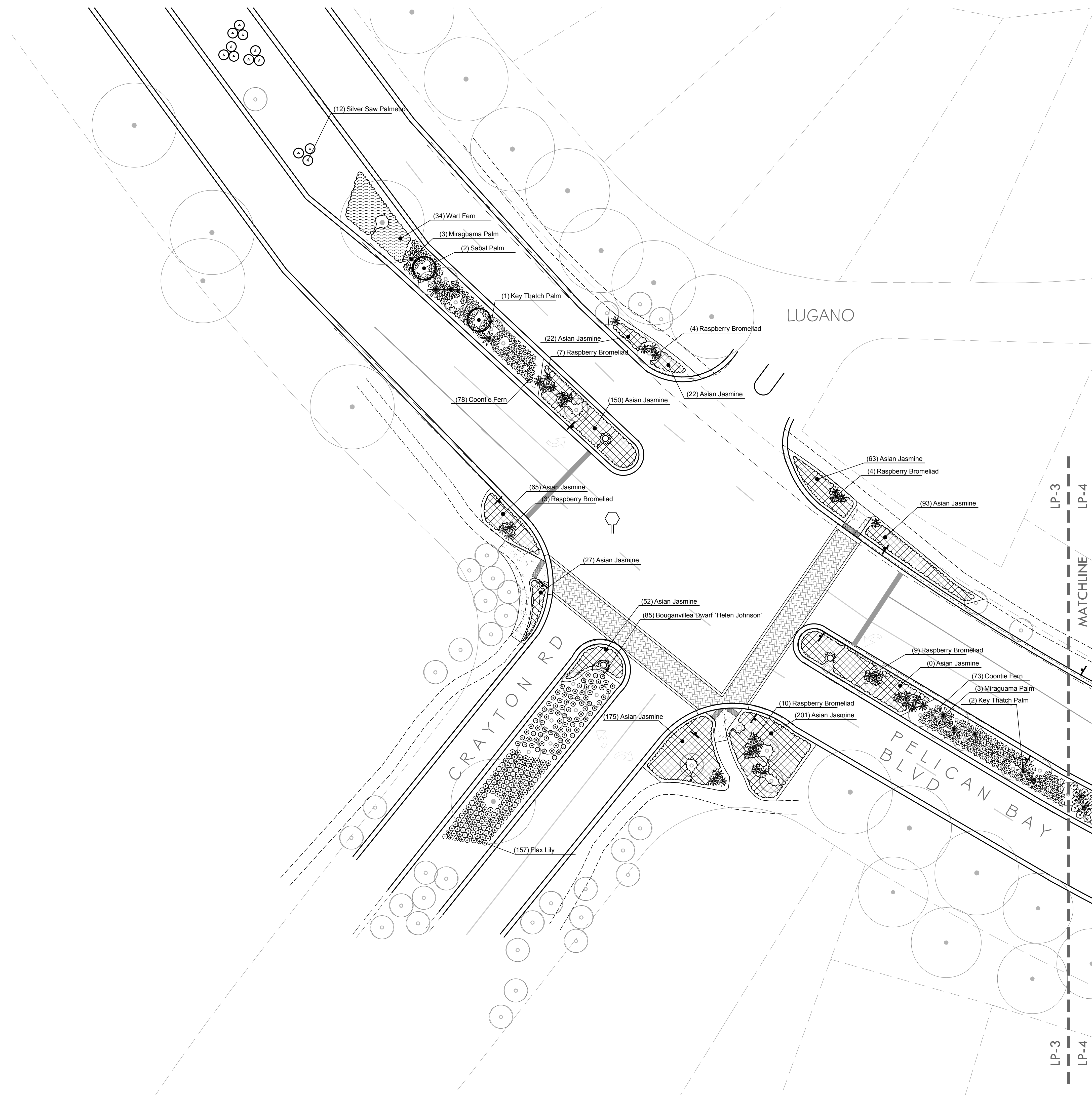
Seal & Signature
 Elin Goetz - FL#1152

PBSD ROADWAY IMPROVEMENTS
 PELICAN BAY BLVD & MYRA J. DANIELS BLVD INTERSECTION
 NAPLES, FLORIDA
 ROADWAY PLANTING PLANS

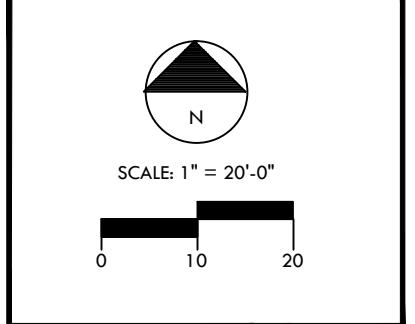


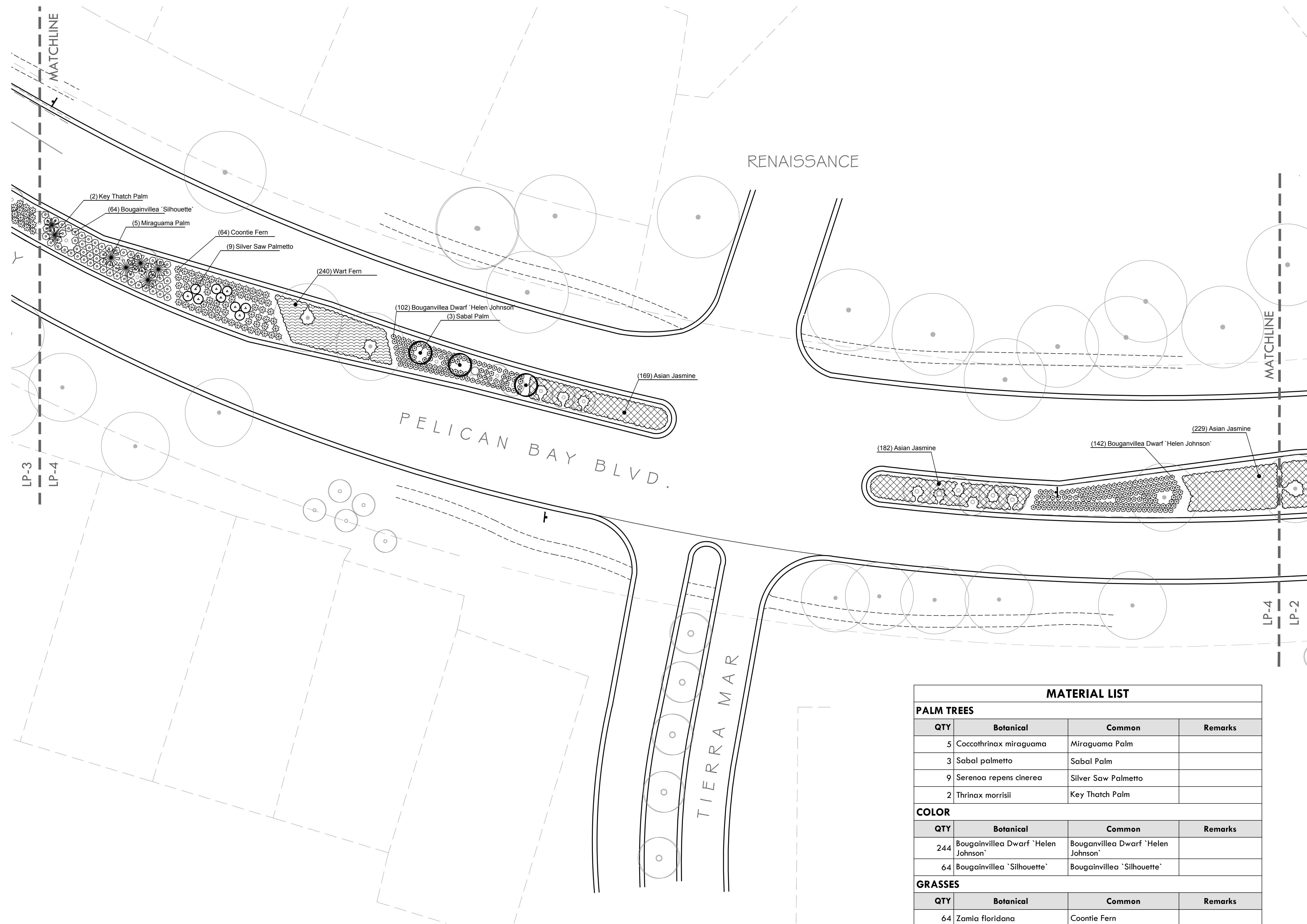
DRAWN: WV8
 CHECKED: EG
 DATE: 7/20/11
 DWG: PBSD ROADWAY 8-4-11

REVISION: SHEET
LP-2



MATERIAL LIST			
PALM TREES			
QTY	Botanical	Common	Remarks
6	Coccothrinax miraguama	Miraguama Palm	
2	Sabal palmetto	Sabal Palm	
12	Serenoa repens cinerea	Silver Saw Palmetto	
3	Thrinax morrisii	Key Thatch Palm	
COLOR			
QTY	Botanical	Common	Remarks
37	Aechmea blanchetiana 'Raspberry'	Raspberry Bromeliad	
85	Bougainvillea Dwarf 'Helen Johnson'	Bougainvillea Dwarf 'Helen Johnson'	
GRASSES			
QTY	Botanical	Common	Remarks
157	Dianella tasmanica 'Variegata'	Flax Lily	
151	Zamia floridana	Coontie Fern	
GROUNDCOVER			
QTY	Botanical	Common	Remarks
34	Microsorium scolopendrium	Wart Fern	
870	Trachelospermum asiaticum	Asian Jasmine	
MATERIAL			
QTY	Botanical	Common	Remarks
	Mulch		All planting beds, 3" depth



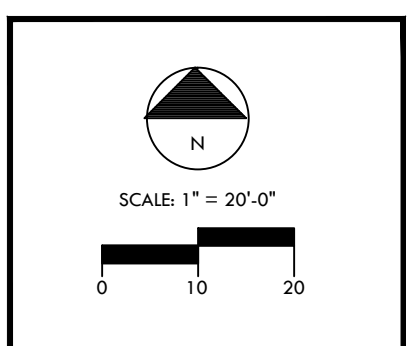


MATERIAL LIST			
PALM TREES			
QTY	Botanical	Common	Remarks
5	Coccothrinax miraguama	Miraguama Palm	
3	Sabal palmetto	Sabal Palm	
9	Serenoa repens cinerea	Silver Saw Palmetto	
2	Thrinax morrisii	Key Thatch Palm	
COLOR			
QTY	Botanical	Common	Remarks
244	Bougainvillea Dwarf 'Helen Johnson'	Bougainvillea Dwarf 'Helen Johnson'	
64	Bougainvillea 'Silhouette'	Bougainvillea 'Silhouette'	
GRASSES			
QTY	Botanical	Common	Remarks
64	Zamia floridana	Coontie Fern	
GROUNDCOVER			
QTY	Botanical	Common	Remarks
240	Microsorium scolopendrium	Wart Fern	
580	Trachelospermum asiaticum	Asian Jasmine	
MATERIAL			
QTY	Botanical	Common	Remarks
	Mulch		All planting beds, 3" depth

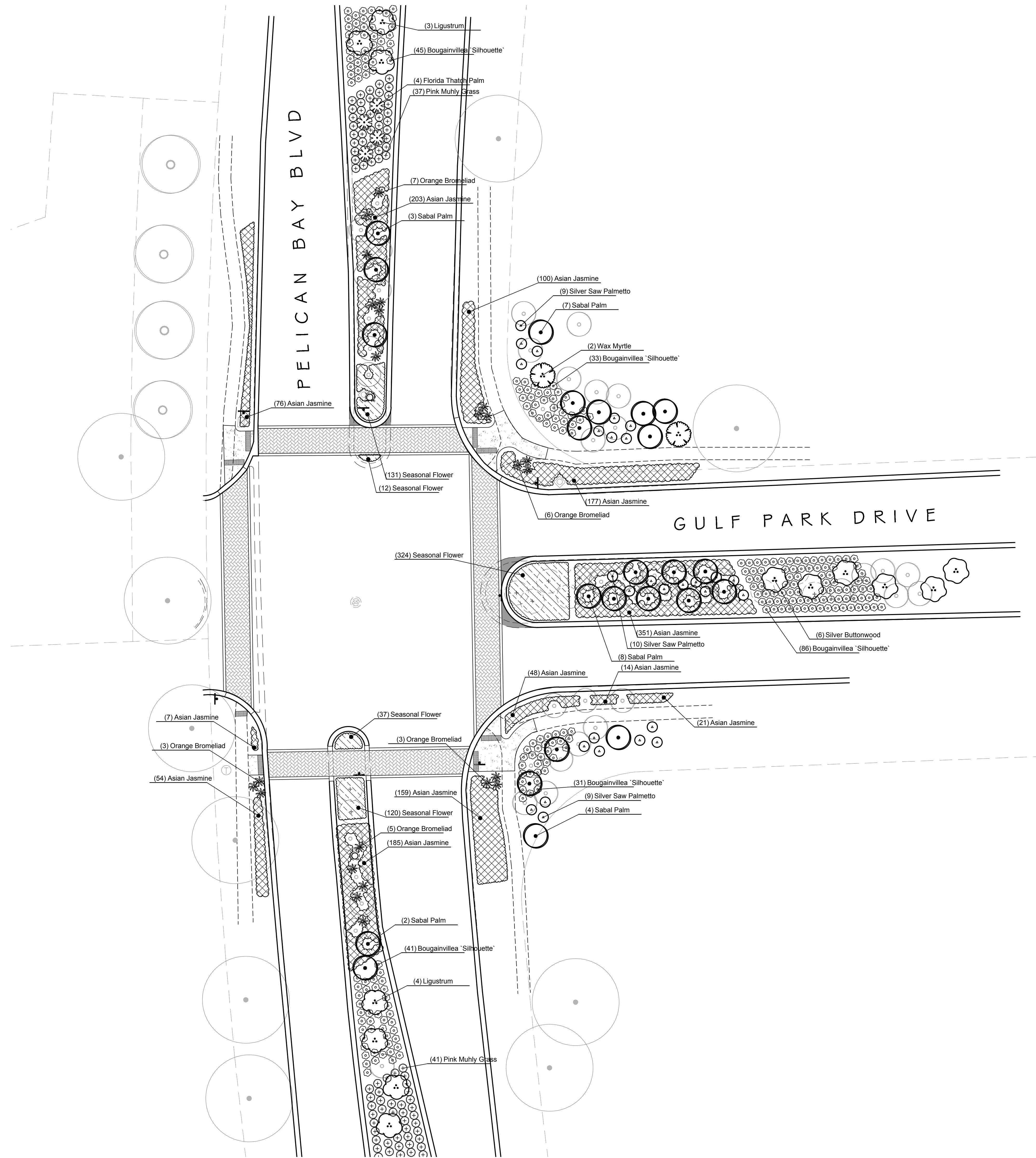
GOETZ + STROPES
 LANDSCAPE ARCHITECTS INC.
 185 TENTH STREET SOUTH, NAPLES, FLORIDA 34102
 t: 239.643.0077 www.goetzstropes.com
 E-mail: egoetz@goetzstropes.com / bbromley@goetzstropes.com

Seal & Signature
 Elin Goetz - FL#1152

PBSD ROADWAY IMPROVEMENTS
 PELICAN BAY BLVD & TIERRA MAR INTERSECTION
 NAPLES, FLORIDA
 TYPICAL MEDIAN CUT THROUGH



DRAWN: WV8
 CHECKED: EG
 DATE: 7/20/2011
 DWG: PBSD ROADWAY 8-4-11
 REVISION: SHEET
LP-4



GOETZ+STROPES
 LANDSCAPE ARCHITECTS INC.

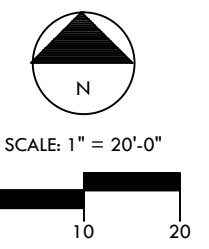
185 TENTH STREET SOUTH, NAPLES, FLORIDA 34102
 t. 239.643.0077 www.gsnaples.com
 E-mail: egoetz@gsnaples.com / bbromley@gsnaples.com

Seal & Signature

Ellin Goetz - FL#1152

PBSD ROADWAY IMPROVEMENTS
PELICAN BAY BLVD & GULF PARK DRIVE INTERSECTION
 NAPLES, FLORIDA

SCHEMATIC ROADWAY INTERSECTION PLANS



DRAWN: WV8
 CHECKED: EG
 DATE: 7/20/2011
 DWG: PBSD ROADWAY 8-4-11

REVISION: SHEET

L1-5